



Upgrade Portable Design Fusion V12

NEW PRODUCTS

- Roll Up Professional 850, Silver & Blue
- 850 Double, Silver
- Brochure Stand
- 4 Brochure



NEW FEATURES

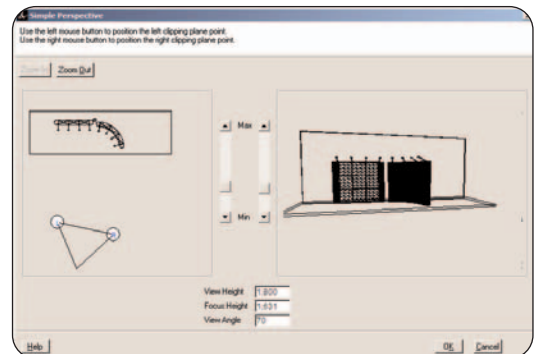
- Change graphics on the entire Pop Up, Pop Up Transport Box, Soft Image (with covered sides) and Soft Image Counter in one step.



- Bringing in a reversed image for Pop Up Tower is no longer needed.



- A new function "Simple view" allows you to view your design from a position far from the stand etc.



Updating Dongle for Portable Design Fusion V12

UPGRADE DONGLE (HARDWARE KEY)

If you not already have Insert the Dongle, do it now.

Move the mouse pointer over the **Start** button on the toolbar and click.

A menu will appear, click **Programs**.

Then from the cascading menus click **Planit Fusion Expolinc** then **Dongle Update**.

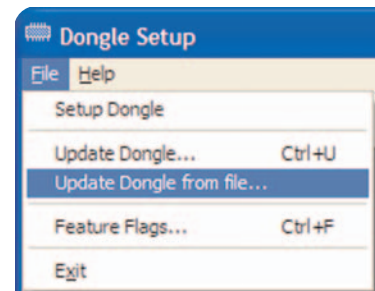


This has now started **Dongle Update**.

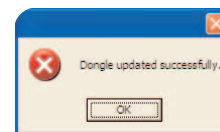
Select **Update Dongle from file...** from the File menu.

Search for your personal encryption code from the e-mail (xxxxx.txt) you saved on the desktop.

Double click on the file.



This has now set up the **Dongle** with your personal encryption code for Portable Design Fusion V12



Installation of Portable Design Fusion V12

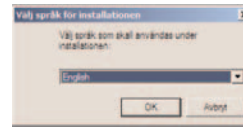
INSTALLATION

Start the installation by left click on the file **PD_V12.exe**

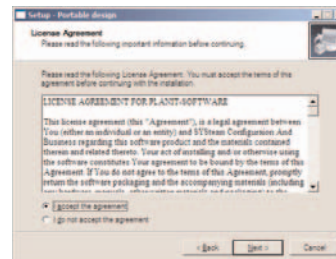
A window will appear showing the language options for the rest of the installation

Left click on the language of your choice and left click on **OK** button.

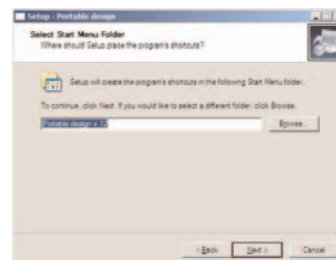
This will start the installation in the language you have chosen.



Read the license agreement. Check the **Accept** to the agreement and left click on the **Next** button.

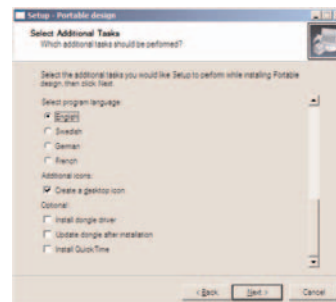


Here you have the possibility to change folder.

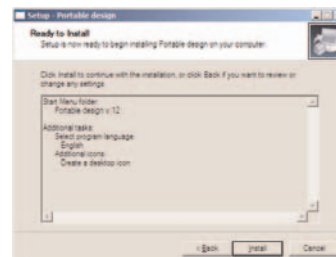


Check the required language for the Portable Design. Check also if you want any optional installation.

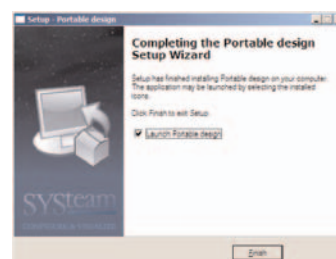
Left click on the **Next** button.



A list appears of your installation settings. Left click on the **Install to continue** or **Back** if you want to review or change any settings.



When this window appears the installation is completed.



Converting Image Container

If you want to use an Image Container from Portable Design V10 in Version 12 you have to convert the Image Container. Do as follows:

Locate the image Container you want to convert.

All Containers have the extension **.CTR**

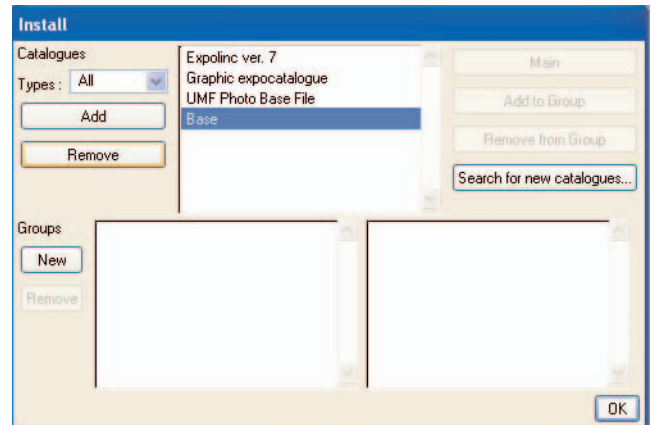
Make a copy of it and change the extension to **.CAT**

Start the **Portable Design V12**.

From the file menu choose **Installer**.

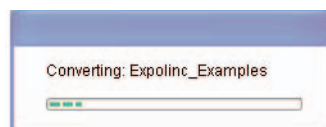
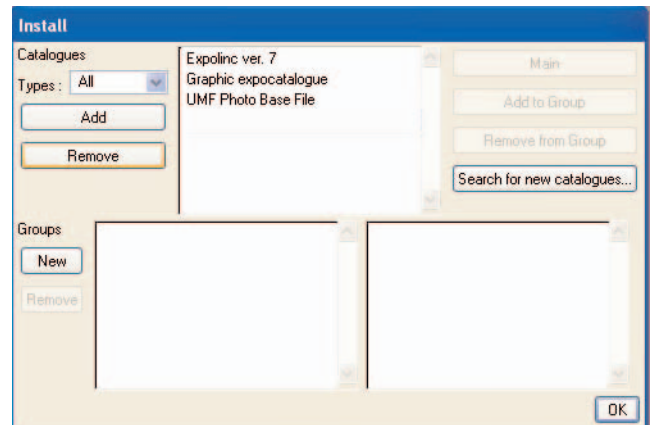
Highlight the **Base** catalogue.

Left click on the **Remove** button.

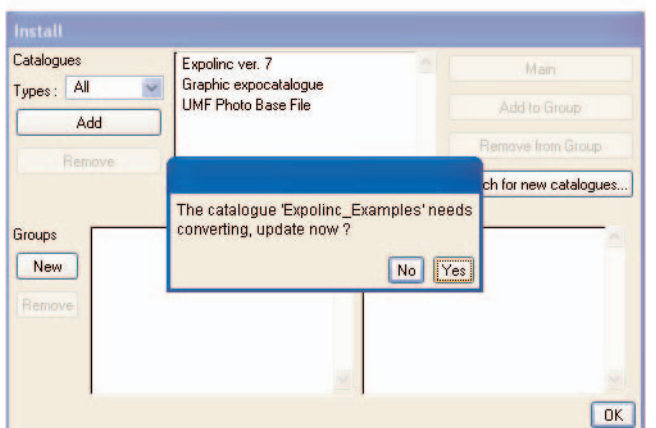


Left click on the **Add** button.

Look for the file you have previously changed and open it.

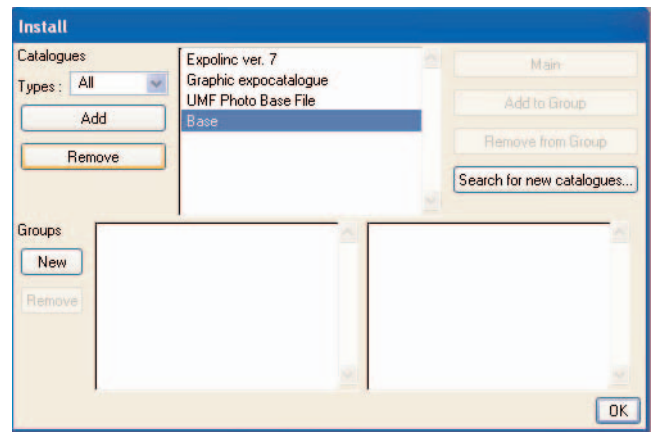


Left click on the **YES** button in the pop up window to start the conversion.

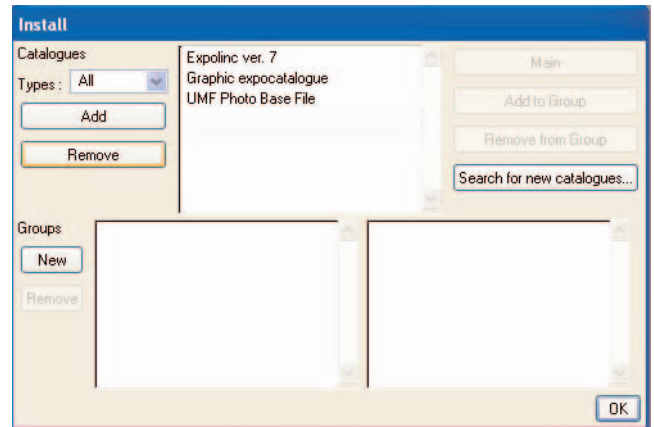


Highlight the **Base** catalogue.

Left click on the **Remove** button.

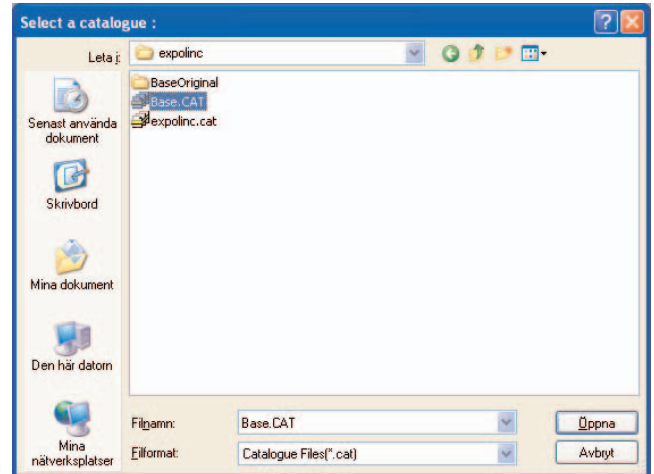


Reload the original Base Catalogue by Left click on the **Add** button.



Go to the Catalogue folder. You find it in Planit Fusion/catalogues/expolinc.

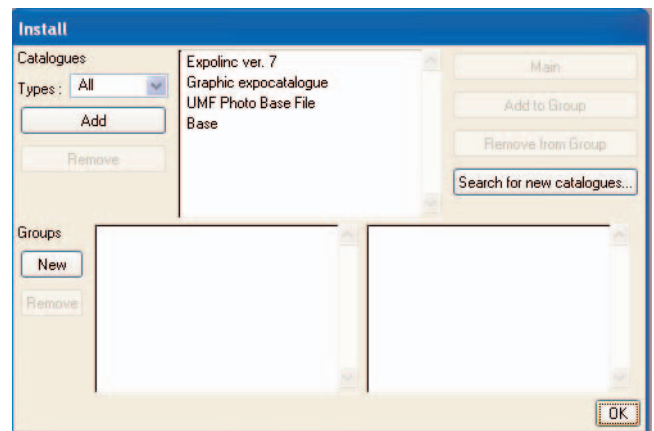
Highlight the **Base.cat** and left click on **Open**.



The **Base** catalogue should now be visible in the window.

Left click on the **OK** button to close the pop up window.

Quit the Portable Design V12.



Locate the converted image Container.

Change to the extension **.CTR** from **.CAT**. Now the Image Container is ready to use in Planit Fusion Expolinc V12.